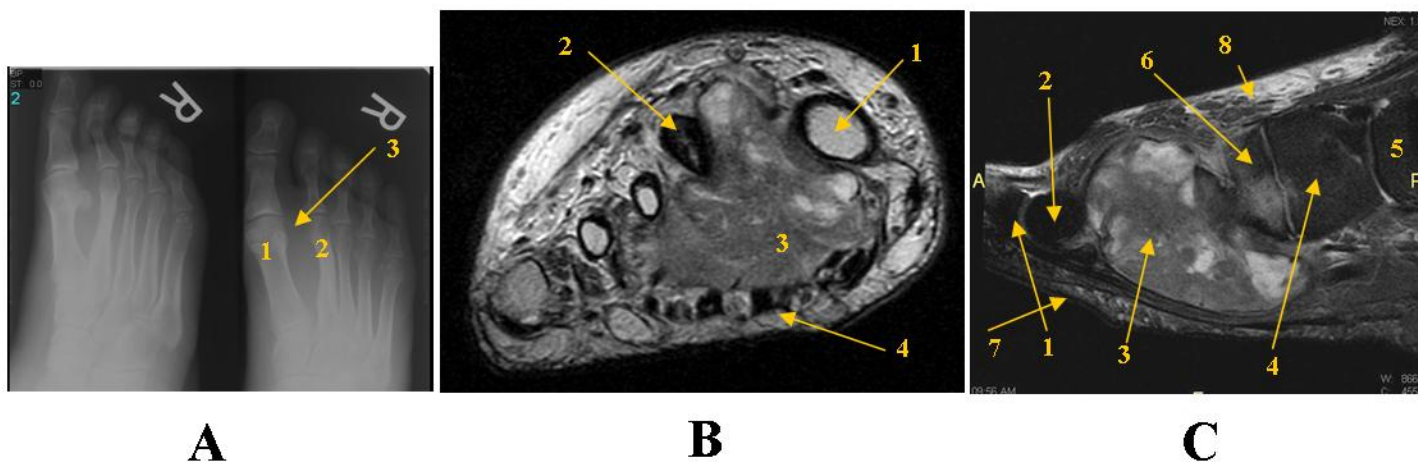


## Foot MRI



**Case:** 66-year-old with progressive forefoot soft tissue swelling, intermittently painful.

### **A X-ray, right hallux frontal view of forefoot.**

#### **Key for Image A:**

1. 1st metatarsal (MT)
2. 2nd metatarsal
3. Subtle splaying of 1st and 2nd MT without evidence of bone destruction. Early Sclerosing of 2nd MT.

### **B Coronal view of forefoot.**

#### **Key for Image B:**

1. 1st MT
2. 2nd MT with sclerosis (black, thickened cortex)
3. Mass insinuating between 1st and 2nd MT. Mixed signal with fatty elements.
4. Notice plantar displacement of flexor tendons.

### **C Sagittal image of forefoot at level of first interspace.**

#### **Key for Image C:**

1. 2nd MT joint
2. Head of 2nd MT
3. Mass with mixed signal including solid and fatty elements
4. Medial cuneiform
5. Navicular
6. Base of 1st MT
7. Flexor tendons
8. Edema along dorsum of forefoot

**Diagnosis:** Myxoid-round cell liposarcoma; aggressive, malignant lesion.

**Teaching Point:** MRI tissue characterization and detailed anatomy morphologic depiction allows more effective preoperative planning and staging.