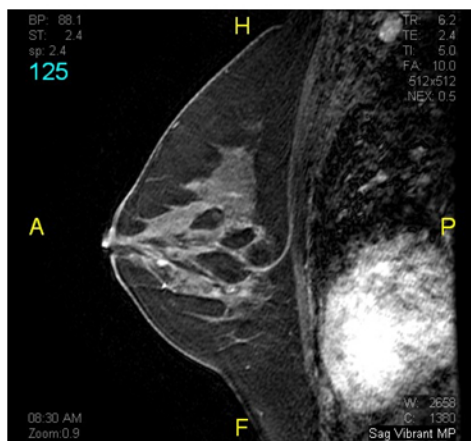
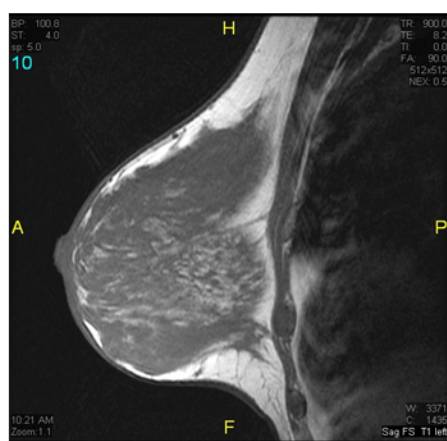


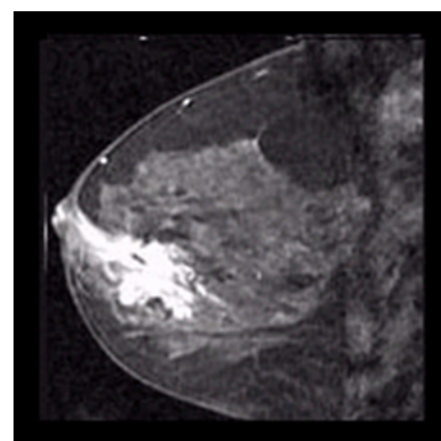
## The MRI Difference



**Normal Breast**



**Dense Breast**



**Breast Showing Pathology**

### The American Cancer Society Recommends Breast MRI

The American Cancer Society advises in their newly-released guidelines that symptom-less women, beginning at age 30, with an unusually high risk of developing breast cancer should get annual MRIs as well as mammograms.

High-risk groups are being defined as:

- Those that carry the BRCA1 and/or BRCA 2 genetic mutations
- Those with a history of Hodgkin's disease
- Those with a strong family history (i.e. women with two or more close relatives who had breast or ovarian cancer or who have a close relative who developed breast cancer before age 50).
- Those with newly diagnosed breast cancer, as scans revealed cancers in the opposite breast that were missed by ordinary mammograms in 3 percent of breast cancer survivors

These groups make up an estimated 1.4 million U.S. women.

MRIs are better at:

- Showing increased blood flow in the breast, a sign of early cancers not visible on mammogram
- Detecting cancer in women with dense, non-fatty breasts

These new guidelines were announced at the same time the New England Journal of Medicine was releasing a national study that suggests women who have cancer in one breast should get an MRI of the other.

MIC's breast program utilizes:

- General Electric's software package known as VIBRANT (Volume Imaging for Breast Assessment) for its breast MRIs. With VIBRANT, we can image both breasts in high resolution, in either the sagittal or axial plane, in one patient visit. We are able to obtain high temporal resolution without sacrificing spatial resolution and eliminate fat with absolute reliability and confidence.
- Breast spectroscopy and Computer Aided Detection (CAD) to aid in diagnosis
- Most breast MRI studies are completed on our newly installed 3 tesla GE magnet which enables us to provide superior images and leading-edge applications.
- A core group of 5 physicians who have been reading breast MRI since 1997. Each case is double-read.

PLEASE CALL US WITH ANY QUESTIONS.